

Flexible Chemical Couplings



Ferenco Chemical Couplings provide a flexible and watertight connection on drainage systems that require a high chemical resistance to a wide range of chemicals.

Manufactured to meet specific site requirements, Ferenco Chemical Couplings withstand the widest possible range of chemicals, due to the shear band and clamping bands encasing a high-performance elastomeric sleeve with a chemically resistant one-piece Fluoropolymer (FEP) liner and PTFE seals.

Part Number	Description	Min. Inch	Max. Inch
CC56G	1 1/2" PL/CI/GL	1.73"	2.09"
CC65G	2" PL/CI/GL or 1 1/2" DU	2.13"	2.60"
CC75G	2" DU or 2 1/2" PL	2.64"	3.11"
CC100G	3" PL/CI/GL	3.15"	3.50"
CC115G	3" DU/DI	3.54"	4.29"
CC125G	4" PL/CI/GL/DU/DI	4.33"	5.20"
CC180G	6" PL/CI/GL/DU/DI	6.22"	7.01"
CC225G	8" PL/CI/GL/DU/DI	8.35"	9.21"
CC275G	10" CI/GL	9.25"	10.59"
CC290G	10" PL/DU/DI	10.63"	12.09"
CC335G	12" PL/CI/GL	12.25"	12.75"
CC345G	12" DU/DI	12.75"	13.50"

PL: Plastic CI: Cast Iron DU: Duroiron DI: Ductile Iron GL: Glass

Benefits

- Transitions dissimilar chemical piping and sizes
- Chemical resistant drain system, connects chemical waste piping to chemical waste tanks
- One piece Fluoropolymer (FEP) liner
- Max temp: 212° F consistent, 266° F intermittent
- 4.3 PSI maximum test pressure

Applications

- Connects chemically resistant DWV pipe and fittings
- Connects drain pipe for: chemistry labs, research labs, beverage plants, commercial kitchens, printing, as well as medical, pharmaceutical, pulp, film and chemical facilities
- Suitable for above & below ground use

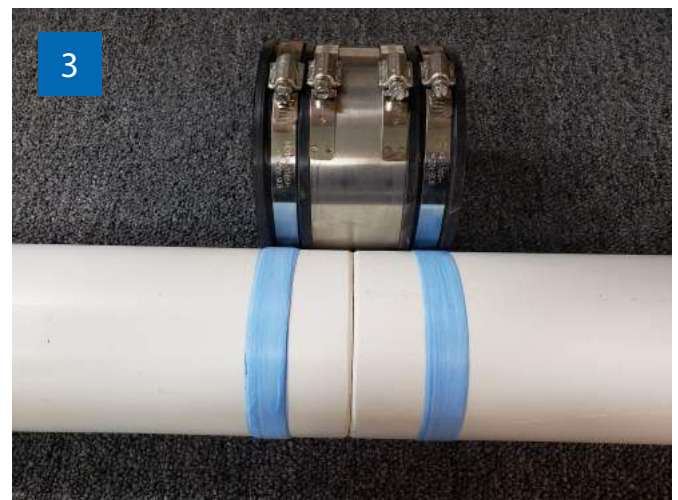
Installation:



Chamfer and deburr both pipe ends.



Mark the pipes adjacent to the coupling bands.



Apply Ten (10) layers of PTFE tape directly over the lines on the pipe.



Center the FEP liner over the pipe ends and PTFE tape. Use heat gun to fully shrink the liner.



Install the coupling. Tighten band to 60 inch pounds. Test for leaks.