

# Flexible Chemical Couplings

## High-Performance / High Chemical Resistance

Fernco Chemical Couplings provide a flexible and watertight connection on drainage systems that require a high chemical resistance to a wide range of chemicals. Manufactured to meet specific site requirements, Fernco Chemical Couplings withstand the widest possible range of chemicals, due to the shear band and clamping bands encasing a high-performance elastomeric sleeve with a chemically resistant one-piece Fluoropolymer (FEP) liner and PTFE seals.

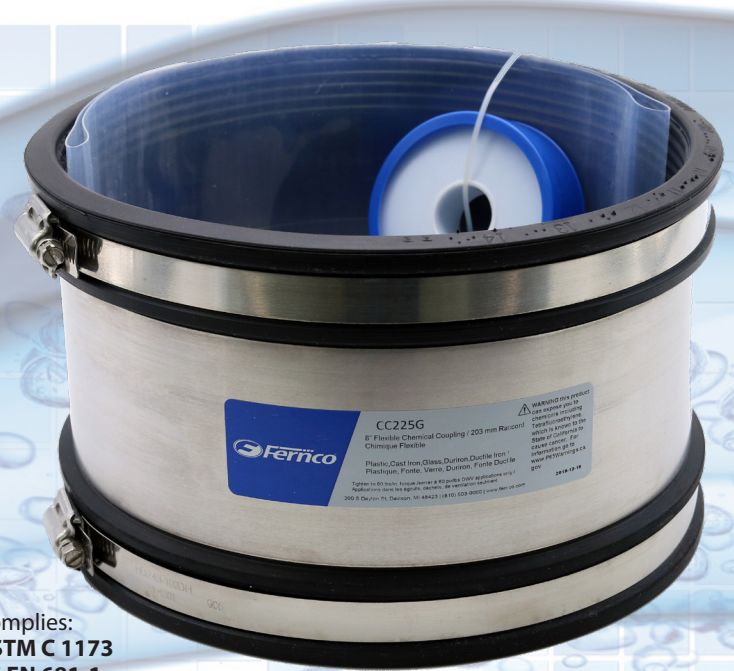
### BENEFITS

- Transitions dissimilar chemical piping and sizes
- Chemical resistant drain system, connects chemical waste piping to chemical waste tanks
- One piece Fluoropolymer liner
- Max temp: 212°F (*consistent*), 266° F (*intermittent*)
- Minimum temperature -50°F
- 4.3 PSI maximum test pressure

### For Above & Below Ground

### APPLICATIONS

- Connects chemically resistant DWV pipe and fittings
- Connects drain pipe for: chemistry labs, research labs, beverage plants, commercial kitchens, printing, as well as medical, pharmaceutical, pulp, film and chemical facilities
- Custom sizes available upon request



Complies:  
**ASTM C 1173**  
**BS EN 681-1**

Part Number	Description	Min. Inch	Max. Inch
CC56G	1 1/2" PL/CI/GL	1.73"	2.09"
CC65G	2" PL/CI/GL or 1 1/2" DU	2.13"	2.60"
CC75G	2" DU or 2 1/2" PL	2.64"	3.11"
CC100G	3" PL/CI/GL	3.15"	3.50"
CC115G	3" DU/DI	3.54"	4.29"
CC125G	4" PL/CI/GL/DU/DI	4.33"	5.20"
CC180G	6" PL/CI/GL/DU/DI	6.22"	7.01"
CC225G	8" PL/CI/GL/DU/DI	8.35"	9.21"
CC275G	10" CI/GL	9.25"	10.59"
CC290G	10" PL/DU/DI	10.63"	12.09"
CC335G	12" PL/CI/GL	12.25"	12.75"
CC345G	12" DU/DI	12.75"	13.50"

PL - Plastic / CI - Cast Iron / DU - Duroon / DI - Ductile Iron / GL - Glass

World - Wide Manufacturer Of Flexible Couplings

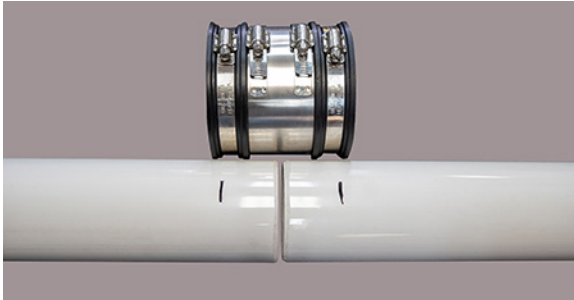


[www.Fernco.com](http://www.Fernco.com)  
 (810) 503-9000

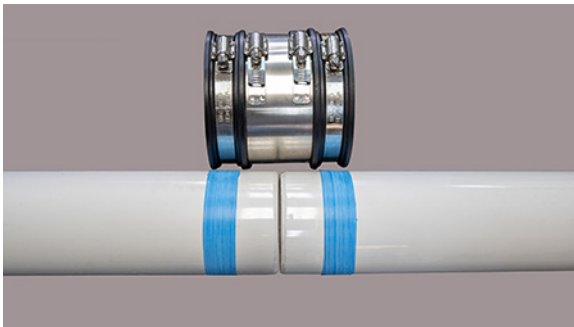
# Flexible Chemical Couplings Installation Instructions



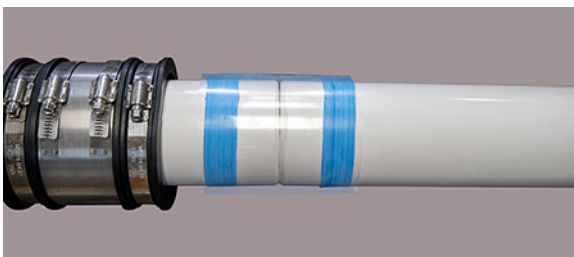
1. Chamfer and deburr both pipe ends.



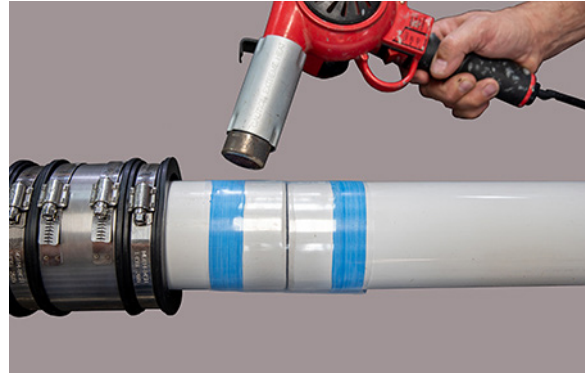
2. Mark the pipes adjacent to the coupling bands.



3. Apply Ten (10) layers of PTFE tape directly over the lines on the pipe.



4. Center the FEP liner over the pipe ends and PTFE tape.



5. Use a heat gun to shrink the FEP liner to the pipe.



6. Center the coupling and tighten the bands.



7. Ensure all bands are tightened to 60 inch pound.



8. Test for leaks.

World-Wide Manufacturer Of Flexible Couplings



Chemical Resistance Chart