

TRENCHLESS SOLUTIONS TRENCHLESS SOLUTIONS



INFRASTRUCTURE

PRODUCT CATALOG

SCAN HERE FOR  
DIGITAL COPY



TRENCHLESS SOLUTIONS TRENCHLESS SOLUTIONS





# TRENCHLESS SOLUTIONS

ADVANCING PIPE & INFRASTRUCTURE REHABILITATION

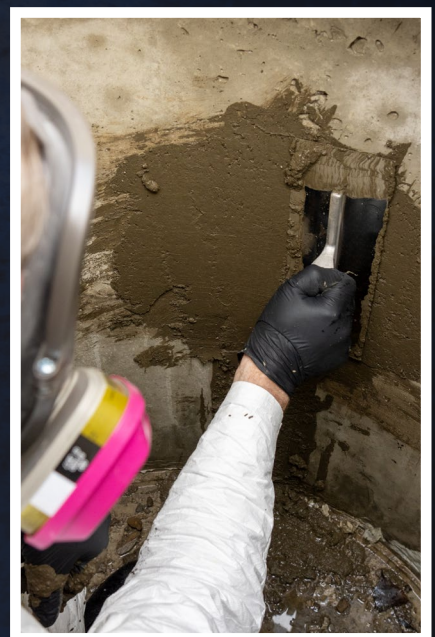




## INFRASTRUCTURE

**Introducing Fernco Infrastructure**—a comprehensive suite of solutions designed to address the growing challenges of aging sewer and manhole systems. As infrastructure deteriorates, municipalities face increasing demands to restore critical assets while minimizing disruption and controlling costs. Fernco Infrastructure brings together industry-leading technologies that streamline the repair process, ensuring long-term durability without unnecessary road closures or business disruptions.

With trusted solutions from PipePatch, Strong Company, SealGuard, and Madewell, we provide municipalities, contractors, and distributors with the tools they need to stop leaks, reinforce structures, and restore pipelines—quickly, effectively, and without excavation. Fernco Infrastructure is committed to delivering proven, high-performance solutions that help communities maintain essential infrastructure for generations to come.

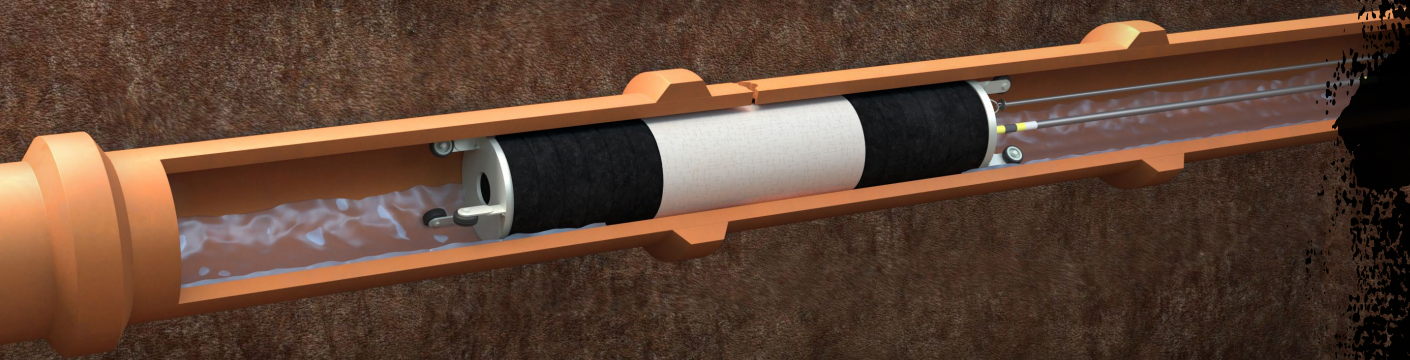






# NO DIG

## PIPE REPAIR SYSTEM



**ECO**  
FRIENDLY  
CONTAINS NO VOCs

### PIPEPATCH® CERTIFICATIONS &

### STANDARDS COMPLIANCE



Plastic Piping System  
Components and Related  
Materials



IAPMO Research and Testing  
assessment of the Quality  
Assurance System



PipePatch complies with standards ASTM F 1216/  
ASTM F 3541 "Standard Practice for Rehabilitation  
of Existing Pipelines and Conduits by Inversion and  
Curing of a Resin-Impregnated Tube"



# PIPEPATCH® STANDARD

|            | Part Number | Description             |            | Part Number | Description             |
|------------|-------------|-------------------------|------------|-------------|-------------------------|
| 24" LENGTH | FPP-3       | 3" x 24" PipePatch Kit  | 48" LENGTH | FPP-3X48    | 3" x 48" PipePatch Kit  |
|            | FPP-4       | 4" x 24" PipePatch Kit  |            | FPP-4X48    | 4" x 48" PipePatch Kit  |
|            | FPP-6       | 6" x 24" PipePatch Kit  |            | FPP-6X48    | 6" x 48" PipePatch Kit  |
|            | FPP-8       | 8" x 24" PipePatch Kit  |            | FPP-8X48    | 8" x 48" PipePatch Kit  |
|            | FPP-10      | 10" x 24" PipePatch Kit |            | FPP-10X48   | 10" x 48" PipePatch Kit |
|            | FPP-12      | 12" x 24" PipePatch Kit |            | FPP-12X48   | 12" x 48" PipePatch Kit |
|            | FPP-15      | 15" x 24" PipePatch Kit |            | FPP-15X48   | 15" x 48" PipePatch Kit |
|            | FPP-18      | 18" x 24" PipePatch Kit |            | FPP-18X48   | 18" x 48" PipePatch Kit |
|            | FPP-24      | 24" x 24" PipePatch Kit |            | FPP-24X48   | 24" x 48" PipePatch Kit |

# PIPEPATCH® ELBOW

|           | Part Number | Description                  |           | Part Number | Description                  |
|-----------|-------------|------------------------------|-----------|-------------|------------------------------|
| 24" ELBOW | FPP-EL2     | 2" x 18" Elbow PipePatch Kit | 48" ELBOW | FPP-EL3X48  | 3" x 48" Elbow PipePatch Kit |
|           | FPP-EL3     | 3" Elbow PipePatch Kit       |           | FPP-EL4X48  | 4" x 48" Elbow PipePatch Kit |
|           | FPP-EL4     | 4" Elbow PipePatch Kit       |           | FPP-EL6X48  | 6" x 48" Elbow PipePatch Kit |
|           | FPP-EL6     | 6" Elbow PipePatch Kit       |           |             |                              |
|           | FPP-EL8     | 8" Elbow PipePatch Kit       |           |             |                              |
|           | FPP-EL10    | 10" Elbow PipePatch Kit      |           |             |                              |

# PIPEPATCH® XTEND

| Part Number   | Description                            |
|---------------|--|
| FPP-EXT-3x120 | 3" x 120" Pipe XTEND Pull-in-Place kit |
| FPP-EXT-3x180 | 3" x 180" Pipe XTEND Pull-in-Place kit |
| FPP-EXT-4x120 | 4" x 120" Pipe XTEND Pull-in-Place kit |
| FPP-EXT-4x180 | 4" x 180" Pipe XTEND Pull-in-Place kit |
| FPP-EXT-6x120 | 6" x 120" Pipe XTEND Pull-in-Place kit |
| FPP-EXT-6x180 | 6" x 180" Pipe XTEND Pull-in-Place kit |
| FPP-EXT-8x120 | 8" x 120" Pipe XTEND Pull-in-Place kit |
| FPP-EXT-8x180 | 8" x 180" Pipe XTEND Pull-in-Place kit |

# PIPEPATCH® PILLOW

| Part Number | Description                      |
|-------------|----------------------------------|
| FPP-3036x48 | 30" to 36" x 48" Kit No Fold Kit |
| FPP-4248X48 | 42" to 48" x 48" Kit No Fold Kit |
| FPP-60X48   | 60" x 48" No Fold Kit            |
| FPP-72X48   | 72" x 48" No Fold Kit            |



**SCAN HERE**  
TO VIEW OUR FULL LINEUP  
OF PIPEPATCH KITS, EQUIPMENT AND ACCESSORIES





## X-SEAL

Hydrophobic polyurethane sealant that bonds to concrete, metal, plastic, wood, and pre-cast connections to prevent infiltration.

## MAINSTAY DS-5

100% solids epoxy coating with a durable curing system for toughness, flexibility, and chemical resistance.

## SEALGUARD II

Polyurethane grout that quickly seals active leaks in precast, cement, or brick structures, stopping infiltration permanently.

## QSR

Rapid-setting, acid-resistant calcium aluminate for bench, invert, and void rehab. Sets in 10-15 minutes for quick restoration.

## MADEWELL® ML-10

High-strength, low-shrinkage mortar for restoring concrete structures, sealing surfaces, and resisting hydrostatic pressure.

## MADEWELL® 711

100% solids urethane sealant for manhole chimneys and expansion joints, creating a flexible, durable, water-resistant bond.

## HYPERFLEX

Hydrophobic polyurethane grout that seals concrete leaks with a permanent, non-shrinking bond. NSF-ANSI-CAN 61 approved for potable water.

## STRONG PLUG

Rapid-setting (60 seconds), hand-applied cementitious product for stopping infiltrating water.

## MS-2®A | MS-2®C

**MS-2A** provides cost-effective infiltration and structural restoration, while **MS-2C** delivers high strength and corrosion resistance in mild sulfide environments.

## HIGH PERFORMANCE

100% calcium aluminate mortar that restores structures in corrosive environments, stopping infiltration and forming a durable liner for pH 1.0+ substrates.

## STRONG COMPANY

### CEMENTITIOUS REPAIR PRODUCTS

#### • COMPREHENSIVE REHABILITATION

Strong-Seal® Systems are engineered to restore concrete and masonry structures, addressing inflow, infiltration, and corrosion.

#### • STORMWATER REPAIR

Storm Seal® restores pipes, culverts, and basins using cost-effective centrifugal casting or spraying methods.

#### • MANHOLE SOLUTIONS

Specialized cementitious products and patented equipment designed for effective manhole rehabilitation.



### Part Number

### Description

|                      |   |
|----------------------|---|
| SGROUT250            | Strong-Seal Grout 250 Cementitious Grout Void and Leak Stabilization   60 lb. Bag |
| SGROUT12000          | Strong-Seal Grout 1000 High-Strength Cementitious Grout   60 lb. Bag              |
| SGROUT1000           | Strong-Seal Grout 12000 Self-Consolidating Grout   65 lb. Bag                     |
| STORM-SEAL           | Strong-Seal® Storm Seal® Spray-Applied Lining   60 lb. Bag                        |
| QSR-PAIL             | Strong-Seal® QSR Fast-Acting Repair Mortar   40 lb. Bucket                        |
| QSR-BAG              | Strong-Seal® QSR Fast-Acting Repair Mortar   50 lb. Bag                           |
| PROFILE-PLUS         | Strong-Seal Profile Plus Cementitious Liner   60 lb. Bag                          |
| STRONG-PLUG          | Storm-Seal® Strong-Plug® Rapid-Acting Leak-Stop Cement   50 lb. Bucket            |
| MS-2C                | Strong-Seal MS-2®C Bag High-Strength Mortar   60 lb. Bag                          |
| MS-2A                | Strong-Seal MS-2®A Economical Cementitious Mortar   60 lb. Bag                    |
| HIGH-PERFORMANCE-MIX | Strong-Seal High Performance Mix   60 lb. Bag                                     |
| GEOPOLYMER           | Strong-Seal Geopolymer for Structural Rehabilitation   65 lb. Bag                 |





## SEALGUARD

### HYDROPHOBIC POLYURETHANE GROUT REPAIR PRODUCTS



- RAPID REACTION TIME**

SealGuard II is a dual-component hydrophobic polyurethane that reacts within 1 to 3 seconds, effectively stopping high-flow leaks exceeding 50 gallons per minute.

- DURABLE AND NON-SHRINKING**

Being hydrophobic, SealGuard grouts do not absorb water or shrink after curing, ensuring long-lasting seals in various structures, including manholes, vaults, and tunnels.

- VERSATILE APPLICATION**

Suitable for both high-flow and low-flow leaks, SealGuard products can be injected into fine fractures and perform well even in the presence of flowing water, making them ideal for diverse infrastructure repairs.

| Part Number  | Description  |
|--------------|--|
| SG-6KITST    | SealGuard II Starter Kit (6pk) with Dual Component Caulk Gun |
| SG-CGUND     | Premium Dual Component Caulk Gun                             |
| SG-CGUNPN    | Pneumatic Dual Component Caulk Gun                           |
| SG-MXP6      | SealGuard II Static Mixers (6 pk)                            |
| SG-MXP12     | SealGuard II Static Mixers (12 pk)                           |
| SG-RE6       | SealGuard II Reorder Kit (6 pk) with mixing tips             |
| SG-RE12      | SealGuard II Reorder Kit (12 pk) with mixing tips            |
| SG-HF6       | HyperFlex (300 mil cart.) 6 pack                             |
| SG-HF12      | HyperFlex (300 mil cart.) 12 pack                            |
| SG-HF12TIP   | HyperFlex Tips (12 pk)                                       |
| SG-HF5G      | HyperFlex (5 gallon container)                               |
| SG-X-SEAL-12 | X- Seal (12-300 ml Kit)                                      |

## MADEWELL

### EPOXY COATING AND CEMENTITIOUS REPAIR PRODUCTS



- COMPREHENSIVE RESTORATION SYSTEMS**

The Mainstay® Composite Liner combines high-strength restoration mortars, such as Mainstay® ML-72, with epoxy corrosion barrier coatings like Mainstay® DS-5. This system repairs and protects structures such as manholes, lift stations, and wet wells.

- HIGH-BUILD EPOXY COATINGS**

Mainstay® DS-5 is a 100% solids epoxy coating applied up to 125 mils thick, providing robust protection against corrosion and chemical attack in wastewater environments.

- SPECIALIZED APPLICATION EQUIPMENT**

Madewell manufactures equipment designed for efficient application of their mortars and coatings, ensuring proper installation and optimal performance of their products.

|              |  |
|--------------|--|
| MHR-ML72     | Mainstay® ML-72 Madewell® Sprayable Microsilica Restoration Mortar   |
| MHR-ML72HP   | Mainstay® ML-72HP Madewell® Horizontal Pipe Restoration Mortar   |
| MHR-MLCA     | Madewell® Mainstay® ML-CA Pure Calcium Aluminate Cement Mortar   |
| MHR-MLPF     | Madewell® Mainstay® ML-PF Pure Calcium Aluminate Cement Mortar With 100% Pure Fused Calcium Aluminate Aggregates |
| MHR-ML10     | Madewell® Mainstay® ML-10 Hydraulic Cement Mortar  |
| MHR-GEO      | Madewell® Mainstay® GeoSpin Geopolymer Repair Mortar   |
| MHR-1103     | Madewell® 1103 Epoxy Coal Tar Coating  |
| MHR-DS-5     | Madewell® Mainstay® DS-5 100% Solids Epoxy Coating   |
| MHR-DS-5-UHB | Madewell® Mainstay® DS-5-HB 100% Solids Medium Build Epoxy Coating   |
| MHR-DS-5-FS  | Madewell® Mainstay® DS-5 FS Ultra Fast Set High Build Epoxy Coating  |
| MHR-806      | Madewell® 806 Trowelable Flexible Joint & Manhole Chimney Seal   |
| MHR-711      | Madewell® 711 Sprayable Flexible Joint & Manhole Chimney Seal  |
| MHR-927      | Madewell® 927 Penetrating Epoxy Primer/Sealer  |





INFRASTRUCTURE



(810) 503-9000



[www.fernco.com/infrastructure](http://www.fernco.com/infrastructure)