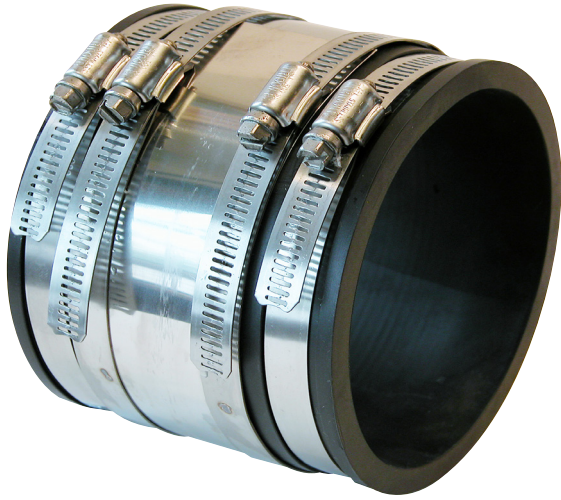


# SRC Stainless Steel Sheer Rings

Add extra strength to any Fernco coupling



Fernco's stainless steel sheer rings help maintain proper alignment in the most unstable ground conditions. Bushings are supplied separately for material transition and size reduction. Stocked separately for convenient use with regular inventory.

Available for Fernco's 1-1/2" to 15" couplings with **CUSTOM SIZES** available.

## Technical Specs

- Series 300 stainless steel bands, nuts and housings
- Designed to fit Fernco coupling series:  
1001-Clay to Clay  
1004- Concrete to Concrete  
1055-AC to AC  
1056-CI/Plastic to CI/Plastic

Part No.	Fits Fernco Coupling Part No.	Length	Width	Band
SRC-9	1056-150	9"	1.5"	32
SRC-11	1056-22	11"	2"	44
SRC-15	1056-33	15"	2"	64
SRC-19	1056-44, 1055-44	19"	2"	88
SRC-22	1001-44, 1004-44, 1056-55	22"	4"	96
SRC-25	1056-66	25"	4"	116
SRC-27	1001-66, 1055-66	27"	4"	128
SRC-28	1004-66	28"	4"	140
SRC-33	1056-88	33"	4"	152
SRC-35	1001-88, 1055-88	35"	4"	164
SRC-37	1004-88	37"	4"	184
SRC-39	1055-1010, 1056-1010	39"	4"	184
SRC-46	1001-1010, 1004-1010, 1055-101212, 1056-1212	46"	4"	(2) 116
SRC-54	1001-1212, 1004-1212	54"	4"	(2) 128
SRC-56	1056-1515	56"	4"	(2) 128
SRC-59	1001-1515	59"	4"	(2) 152
SRC-63	1056-1818	63"	4"	164 & 152
SRC-73	1056-2121	73"	4"	(2) 184

